

MONTHLY MEMBERSHIP PROGRESS REPORT

LOCATION PENNSYLVANIA

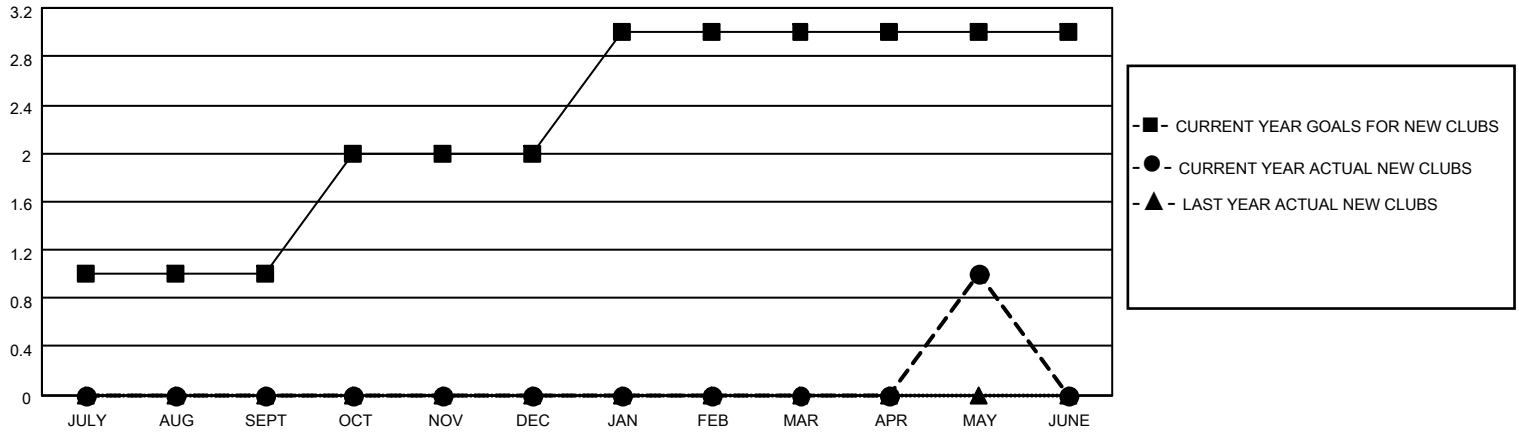
District 14 A

Results as of: 5/31/2023

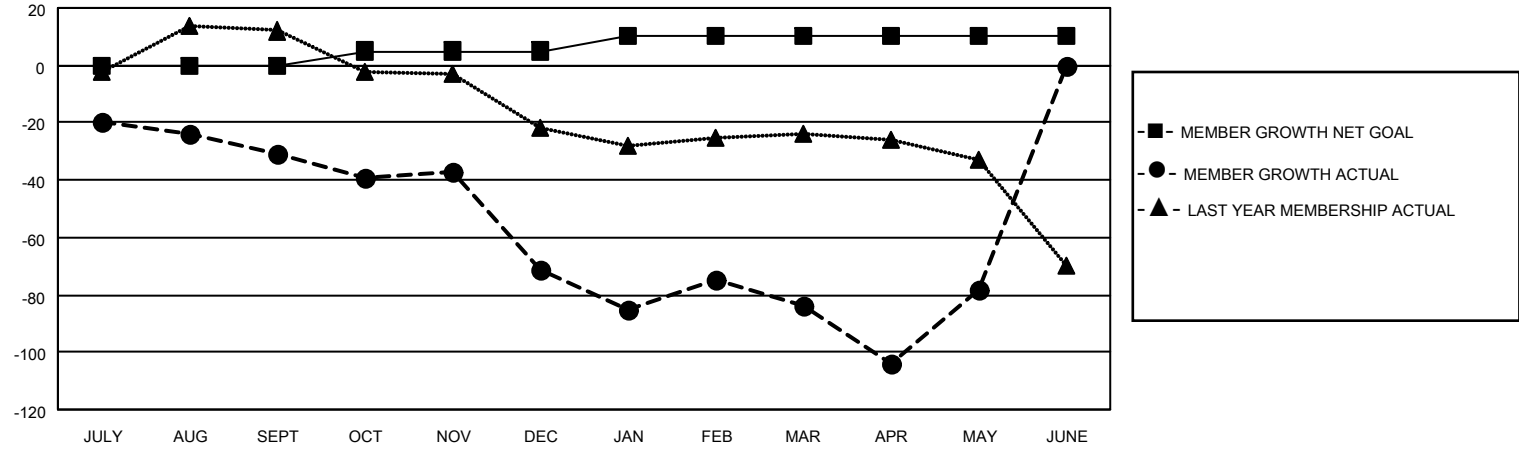
| Clubs | | | |
|-----------------------|---------------|-----------|---------------|
| RESULTS FOR 2022-2023 | | | |
| QUARTER | NEW CLUB GOAL | NEW CLUBS | DROPPED CLUBS |
| JULY/AUG/SEPT | 1 | 0 | 2 |
| OCT/NOV/DEC | 1 | 0 | 2 |
| JAN/FEB/MAR | 1 | 0 | 0 |
| APR/MAY/JUNE | 0 | 1 | 0 |

| Members | | | |
|-----------------------|------------------------|----------------------|---|
| RESULTS FOR 2022-2023 | | | |
| QUARTER | MEMBER GROWTH NET GOAL | MEMBER GROWTH ACTUAL | DROPPED MEMBERS ACTUAL (including transfers) |
| JULY/AUG/SEPT | 0 | 26 | 45 |
| OCT/NOV/DEC | 5 | 29 | 68 |
| JAN/FEB/MAR | 5 | 28 | 40 |
| APR/MAY/JUNE | 0 | 43 | 36 |

GOALS AND ACTUAL NEW CLUBS CUMULATIVE



GOALS AND ACTUAL MEMBERS CUMULATIVE



| | |
|------------------------|------------|
| DROPPED CLUBS: 4 | |
| <u>DROPPED MEMBERS</u> | |
| DECEASED | 31 |
| CLUB CANCELLED | 11 |
| OTHER | 147 |
| TOTAL | 189 |

30 CLUBS OF 62 ADDED 1 OR MORE NEW MEMBERS

[CLICK HERE FOR CUMULATIVE MEMBERSHIP DATA](#)

| <u>GENDER DISTRIBUTION</u> | |
|--|--------------|
| MALE | 862 (64.91%) |
| FEMALE | 466 (35.09%) |
| NON BINARY | 0 (0.00%) |
| PREFER NOT TO ANSWER | 0 (0.00%) |
| TOTAL FAMILY UNIT MEMBERS | 222 |
| FAMILY MEMBERS PAYING HALF DUES | 116 |